

"At Filigree, we strive to create distinct residential experiences with every project. With Botanika Nature Residences, we wanted to give residents space to breathe, paired with the conveniences of vertical living."

- Daphne Sanchez, Filigree Head

Filigree's Two Botanika offers ease, balance in thriving Filinvest City

By Vaughn Alviar

Luxury developer Filigree continues to create thoughtful urban living spaces that offer a sense of calm amid the fast-paced energy of Metro Manila.

This is clearly reflected in the three-tower Botanika Nature Residence, where Filigree is shaping a community that balances access to city life and holistic well-being given its distinction as Filinvest City's most prestigious address, its design and architecture, as well as its features and amenities.

This sense of balance is reinforced by Filinvest City's 15-minute city framework, where daily essentials and green spaces are thoughtfully integrated within the township. Within this broader context, Botanika emerges as a crafted community built to support both connection and retreat.

Botanika Tower 1, now ready for occupancy, has already brought the Botanika vision to life—providing residents comfort, nature, and urban convenience in a strategically located vertical community. From this foundation, Two Botanika moves the development forward, further elevating the community experience.

Exceptional vertical village

Botanika rises as an exceptional "vertical village" in



Isabelle Miaja is the managing and creative director of Miaja Design Group, an international design studio specializing in luxury hospitality and residential design. Based in Singapore, the firm is globally recognized for incorporating bespoke art and cultural storytelling in crafting immersive and experiential spaces. Miaja's hallmark projects include Sofitel So Singapore and JW Marriott Resort & Spa Maldives.

Filinvest City.

"I think the idea of a vertical village is quite beautiful. It's actually quite poetic. It brings back something we've lost in cities: This feeling that life exists around you but gently," Isabelle Miaja, managing and creative director of Miaja Design Group, said in an exclusive interview with Inquirer Property. "I see Botanika as a very thoughtful response to how we want to live today. The vision is to be a safe haven where people go after all their business."

Filigree's bespoke approach to crafting residential commu-

nities is grounded in close collaboration with renowned design firms, each chosen for their ability to create environments with a distinct sense of place. At Botanika Nature Residences, the global interior design firm Miaja Design Group was tasked with shaping the shared community spaces to support a vertical village experience.

Where space shapes everyday living

With fewer residences per floor and generous spatial planning, ultra-low density is embedded into Botanika's design. The towers' terraced configuration reinforces this sense of ease, opening each home to views of greenery, open skies, or the city skyline, while improving airflow and access to natural light throughout the building.

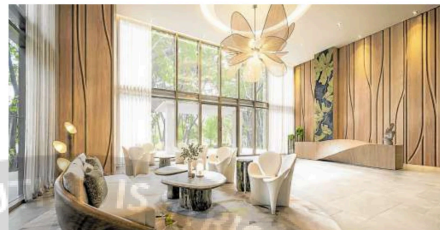
This tiered layout informed Miaja's approach to designing the common spaces. "Botanika elevates the community by designing it in layers—creating proximity without exposure," Isabelle Miaja explained. "Shared spaces are intimate and distrib-

uted, and there's a clear gradient from public to private, so residents can engage on their own terms. That balance allows for a strong sense of community, while always preserving privacy and personal space."

From the outset, common spaces were designed by Miaja to be integral to the Botanika lifestyle. The main lobbies are sophisticated and expansive yet offer a warm, welcoming arrival to residents, while the business center provides a dedicated area for focus and productivity. Leisure spaces are positioned to accommodate activity, including play areas and the gym.

"You're not just moving through spaces—you're actually experiencing them. It's not like you're going from A to B. You're actually finding your way through your own peace of mind," Isabelle Miaja explained.

In Two Botanika, these experiences are further elevated with the addition of a state-of-the-art fitness facility and a Sky Lounge, which offers expansive views and a more refined space for hosting, socializing, or simply



Artist's perspective of Two Botanika's Main lobby

unwinding above the city.

Sustainability as a core principle

Across Botanika Nature Residences' shared spaces, biophilic principles are embedded with purpose.

"Nature is not a decoration," Isabelle Miaja asserted. "Nature plays a big role and it's part of the overall atmosphere. The light, the greenery, the air—it slows you down without you even realizing it."

The landscaped open areas, walkways, and green corridors shape how residents move, pause, and connect throughout the day, creating an environment that feels closer to a private enclave than a conventional condominium.

Botanika's iconic leaf-shaped architecture itself is both expressive and functional, designed to maximize daylight, encourage cross-ventilation, and soften the buildings' presence within their landscaped surroundings. The architecture allows the community to feel connected to the outdoors even within a vertical setting.

Elements such as the sun roof and layered planting support passive cooling, improve air quality, and reduce reliance on artificial lighting and climate control. Together, these design choices form common areas that are both environmentally

responsive and intuitively comfortable.

Beyond its individual features, Botanika reflects Filigree's broader approach to residential development, one that prioritizes longterm livability as a measure of value. The project integrates sustainability into how space is planned, experienced, and maintained over time. This strategic focus allows Botanika to respond to the demands of urban living while reinforcing Filigree as a developer that builds enduring communities, not just residences.

"At Filigree, we strive to create distinct residential experiences with every project. With Botanika Nature Residences, we wanted to give residents space to breathe, paired with the conveniences of vertical living," shared Filigree Head Daphne Mae Odra-Sanchez. "The intention was to create homes with shared spaces that restore balance and calm, proving that city life does not have to come at the expense of well-being."

Scan to Learn More



Artist's perspective of Two Botanika Sky Lounge